



# COMMUNITY REMINDER!



## SHEFFIELD GARDEN WALK

**SATURDAY – JULY 23, 2011  
&  
SUNDAY- JULY 24, 2011**

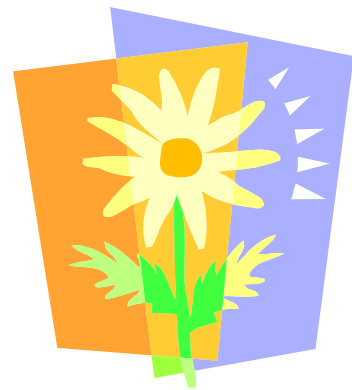
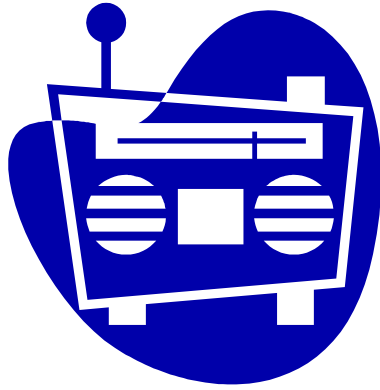
**In cooperation with the Sheffield Neighborhood Association, we urge you to help keep this weekend safe:**

- ❖ The Chicago Police will be highly visible.
- ❖ Use common sense with house parties; i.e., music, parking, litter.
- ❖ You are responsible for guests at your party.
- ❖ Keep the number of guest manageable.
- ❖ Be mindful of porch occupancy.
- ❖ Be attentive to excessive noise.
- ❖ Blocking the public way is prohibited; this includes sidewalks.
- ❖ Placing of furniture (sofas, tables, etc.) on the public way is prohibited without a license
- ❖ No drinking on the public way. This will be strictly enforced

**Remember! This is a residential community. Please celebrate responsibly!**

For further information, contact the 18<sup>th</sup> District Community Policing Office at 312-742-5778





### **Excessive Noise:**

- **Sound cannot be louder than an average conversational level between 10 pm and 8 am if it can be heard at a distance of 100 feet or more from the property line**
- **Sound cannot be audible from a distance of 200 feet or more from the point of generation**

**No person can operate a radio or tape recorder or similar device on the public way if the sound generated is audible at a distance**

---

**Excerpted from the City of Chicago’s warning regarding danger of overloading porches/decks with people, grills, and heavy lawn furniture:**

*“Porches are not designed for large parties or as storage areas. Their purpose is to provide access and exits to a dwelling unit.*

*Building owners and tenants should be aware of the following signs of a structurally unsound porch/deck system:*

- *Decks pulling away from the exterior wall*
- *Weak footing at ground level*
- *Extensive exterior peeling paint*
- *Loose handrails*
- *Cracked or rotted members (i.e., steps, handrails, decking, etc.)*
- *Leaking roof structures, gutters and downspouts above porch systems*
- *Loose and rotting decking and floor joists*
- *Improper connection of structural members (e.g., upright and lookouts)*
- *Balusters improperly installed and maintained*

*If you notice any signs of structural problems with an exterior porch system, please contact 311 and a building inspector will investigate the property.”*